

Groundvue 6

Like all Groundvue Ground Probing Radars, **Groundvue 6** is user friendly and uses easy to operate dedicated software. Operating depth (measured in travel time) is preset with ample margin for ease of use.

Frequency Range

7MHz to 30MHz

Depth Range

Up to 180m

Special Features

A thin inline spread spectrum GPR pulled behind the operator for harsh environments

Hermetically sealed

Internal batteries

Wireless synchronisation and data transfer

Ultrasensitive correlation receiver

Internal data stacking (to improve signal to noise ratio)

GPS interface

Data Storage

Direct to solid disk via wireless link

Resolution

c. 2m



Ancillaries

Datalogger required for radar operation and initial data storage

A specialised battery charger is required to re-charge the unit's internal batteries

A GPS unit will be required for positional information.

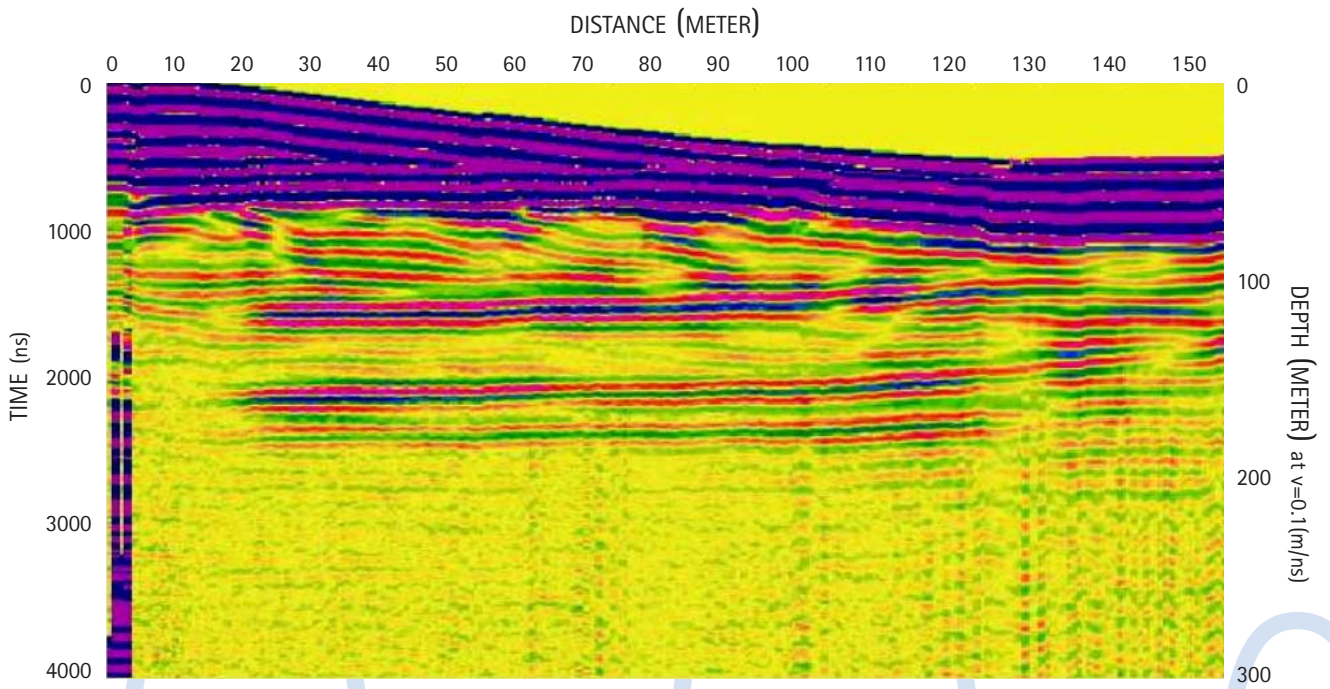
Optional

Analytical software – the ReflexW package – is available. Details on request.



See following page for sample data

Sample data – Groundvue 6



For a demonstration or further advice, please contact

Utsi Electronics Ltd, Unit 26, Glenmore Business Park, Ely Road, Waterbeach, Cambridge CB25 9PG, UK

Tel: ++44 (0)1223 441521

Fax: ++44 (0)1223 863123

E-mail: enquiries@utsielectronics.co.uk

www.utsielectronics.co.uk