



TriVue

Triple Frequency GPR antenna

Utsi Electronics Ltd
Unit 26
Glenmore Business Park
Ely Road
Waterbeach
Cambridge CB25 9PG
UK
enquiries@utsielelectronics.co.uk

The Trivue is a multi frequency Ground Penetrating Radar (GPR) system which comprises of three bistatic bow tie antennas orientated around an identical common mid-point and housed within a light-weight rugged casing. The system is ideally suited for many engineering and geotechnical studies, including; Utility detection, brownfield site mitigation, railway ballasts assessment, road sub-base delineation.

No compromises are made when using the Trivue:

Trivue consists of three independent bistatic bowtie antenna with 250MHz, 500MHz and 1GHz central frequencies offering a system with :

Independent channel record lengths.

All electronics contained within the antenna making it quick and easy to switch between deployment methods.

Wired or WiFi data transfer via UDP IP network protocol.

In built GPS. Check and validate operators field notes using the inbuilt GPS.

Simple and versatile data acquisition software for Windows operating systems.



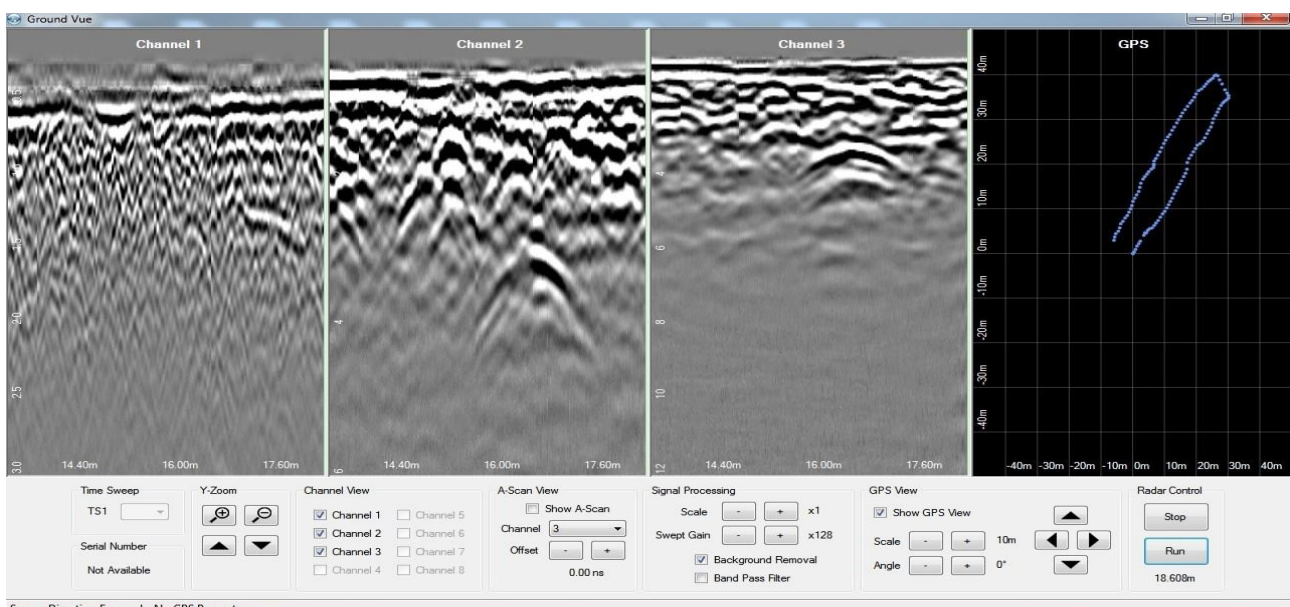
SOFTWARE:

Interrogate each channel in real time.

View channel trace and GPS trail.

Record the raw data, independent of display settings.

Import data into ReflexW, GPRSlice, RoadDoctor and GPRsoft.



Example screen display with 1, 2 and 4 m depth settings and GPS path map.