

**NEW**

★ Denotes features unique to Groundvue GPRs

# Groundvue 3\_8 G.P.R.

**NEW**  
High Speed  
Multi-Channel with  
Wireless Operation  
and Windows Based  
Software

## High Speed Multi-Channel

- Up to 1,600 scans per second
- Traffic speed data collection
- ★ Simultaneous triggering without cross channel interference
- Up to 8 channels – select any number from 1 to 8
- ★ **Independent time sweep** (probing depth in nanoseconds) **on every channel** – 250MHz to 6GHz
- **Independent antenna frequency on every channel**
- ★ Integrated GPS input
- Tablet or laptop operation
- Internal rechargeable battery with option to use external battery

## Wireless Operation

### Flexibility

- **Multi-channel GPR** which can be used in **single- or multi-frequency modes**
- ★ Also a **High Density Array** in either **single- or multi-frequency**
- ★ **The antennas can be positioned in any configuration that the user requires**
- Up to 8 channels: select any number from 1 to 8
- View 1 to 8 channels on screen simultaneously. Change the view during survey without affecting the data recording
- Selectable wiggle trace on any channel
- ★ Changeable gain and filter settings during survey. This does not affect the recorded data in any way



- ★ Up to 4 receivers can be used with a single transmitter  
Since the antennas are simultaneously triggered, **transmission velocity can be calculated automatically** from the multiple receiver data
- This multi-channel can be used for 3-dimensional SAR processing

# NEW

# Groundvue 3\_8 G.P.R.

## Efficient Economic Hardware Design

★ Clear Data

Internal stacking in the receivers with jittered PRF reduces external interference, resulting in clearer data and less requirement for processing

★ Modular

This multi-channel can be used for multiple applications. Why buy two systems if one will do?

Multi-functional

The same system can be used from a trolley or from a vehicle or even hand pulled antennas from the same system

Low power consumption

In the controller and antennas, not solely on the transmitter – max. 1A at 12V (12 watts)

Fully screened

To prevent stray emissions and protect from external transmission

## Efficient Economic Software Design

Windows based software

Tablet, laptop or PC

Raw data recorded

No pre-filtering required

Utility mark up function

For locating utilities on-site

On-screen Tzero correction

The correction is automatically stored in the header file for automatic import into processing package (reduction in processing steps)

On-screen Background Removal

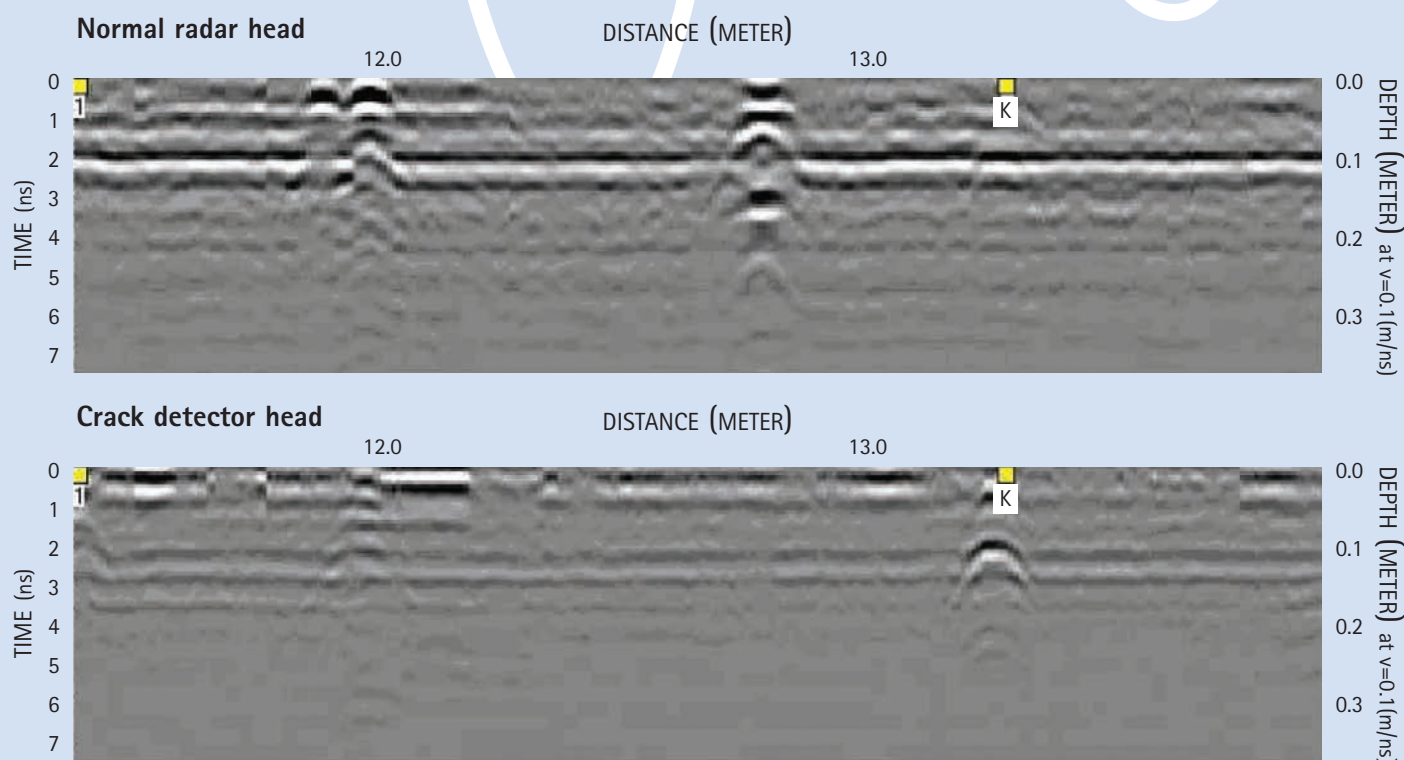
## Added Value Tools

★ Crack Depth Measurement

Any GPR can detect areas of generalised cracking. The adapted crack detection head is used for:

- Accurate detection of joints in concrete
- Depth measurement of surface (top down) cracking
- Detection of subsurface (bottom up) cracking on roads, airports and in structures such as concrete loading bays and flat roofs

## Sample data – crack depth measurement



Marker K shows the position of the crack

**NEW**  
*High Speed  
 Multi-Channel with  
 Wireless Operation  
 and Windows Based  
 Software*

## Added Value Tools – continued

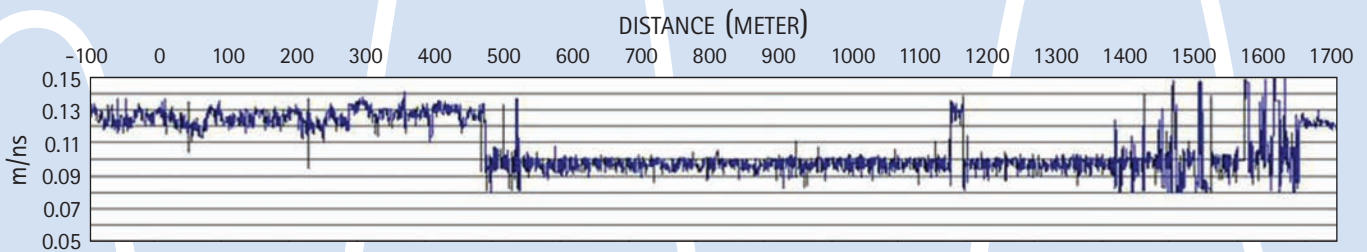
### ★ Automatic Velocity Calibration

Groundvue antennas are simultaneously triggered, not sequentially, and without cross channel interference. Using multiple receivers connected to a single transmitter, continuous comparative data is created. Layer tracing generates the information needed to calculate transmission velocity for the full length of the data collected. In the process, any anomalous areas show clearly. An example of continuous automatic velocity calibration is shown below

## Velocity/distance

Measured using:

**Groundvue 3 1.5GHz antennas (1Tx + 3Rx) and ReflexW software**



## Antenna Frequencies

6GHz, 4GHz (using Groundvue 5), 1.5GHz, 1GHz, 400MHz and 250MHz

## Regulation Compliance

ETSI compliant (CE marked)  
 FCC compliance available on request

## Ancillaries

A laptop or tablet is required for radar operation and data storage

A long term data storage system is essential

A basic 12V battery charger is needed to charge the radar batteries

## Analytical Software

The ReflexW package is also available. Details on request

Groundvue data is also compatible with Roadscanners, GPR-Slice and Geoscanners software

Data formats can be supplied to other software suppliers on request



**For a demonstration or further advice, please contact**

Utsi Electronics Ltd, Unit 26, Glenmore Business Park, Ely Road, Waterbeach, Cambridge CB25 9PG, UK

Tel: ++44 (0)1223 441521

Fax: ++44 (0)1223 863123

E-mail: [enquiries@utsielectronics.co.uk](mailto:enquiries@utsielectronics.co.uk)

[www.utsielectronics.co.uk](http://www.utsielectronics.co.uk)