

# Groundvue 7

Like all Groundvue Ground Probing Radars, **Groundvue 7** is user friendly and uses easy to operate dedicated software. Operating depth (measured in travel time) is preset with ample margin for ease of use.



## Frequency Range

15MHz to 50MHz (mid-frequency 30MHz)

## Depth Range

80m

## Special Features

- Impulse GPR system pulled behind the operator for harsh environments
- Hermetically sealed
- Internal batteries
- Wireless synchronisation and data transfer
- Ultrasensitive receiver
- Internal data stacking (to improve signal to noise ratio)
- GPS interface

## Data Storage

Direct to solid disk via wireless link

## Resolution

c. 0.5m

## Ancillaries

Groundvue 7 is compatible with laptops and tablets equipped with Windows 8, 7 or XP. A datalogger version is also available. A specialised battery charger is required to re-charge the unit's internal batteries. A GPS unit will be required for positional information.

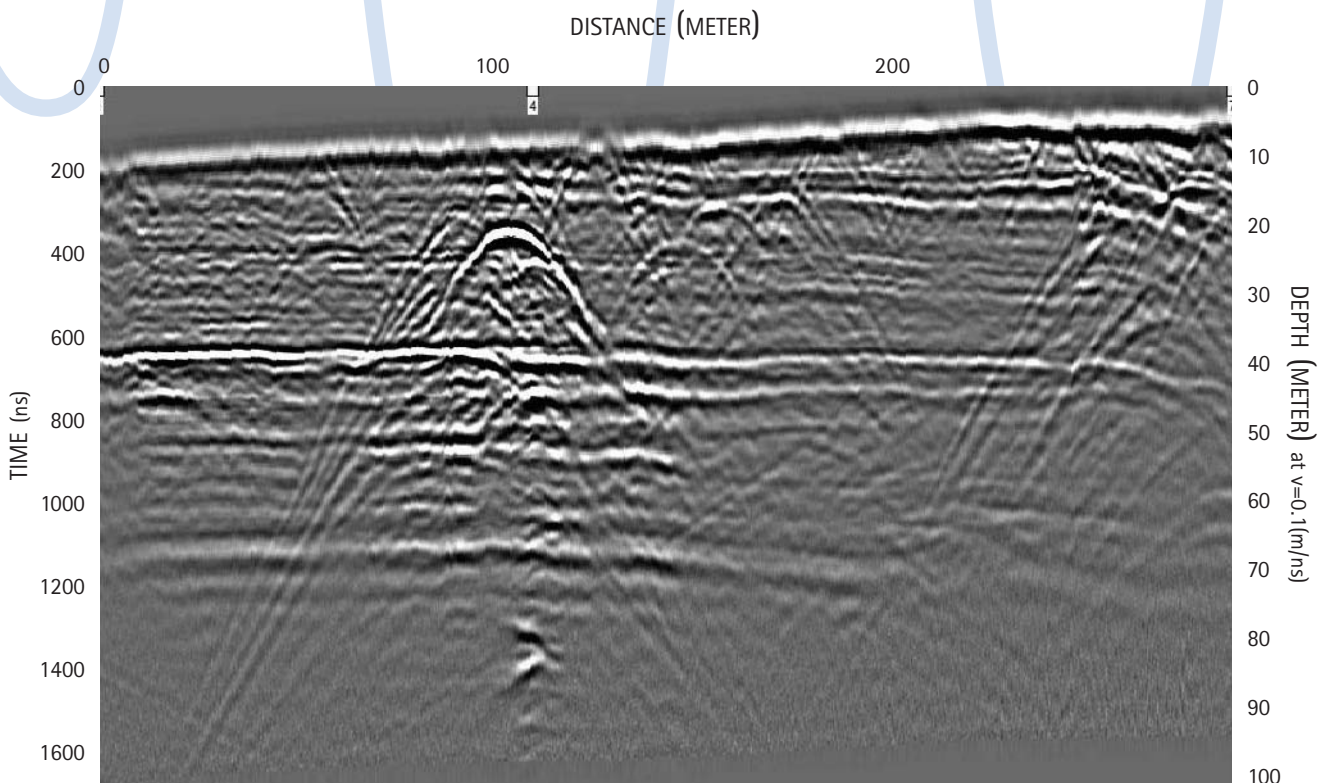
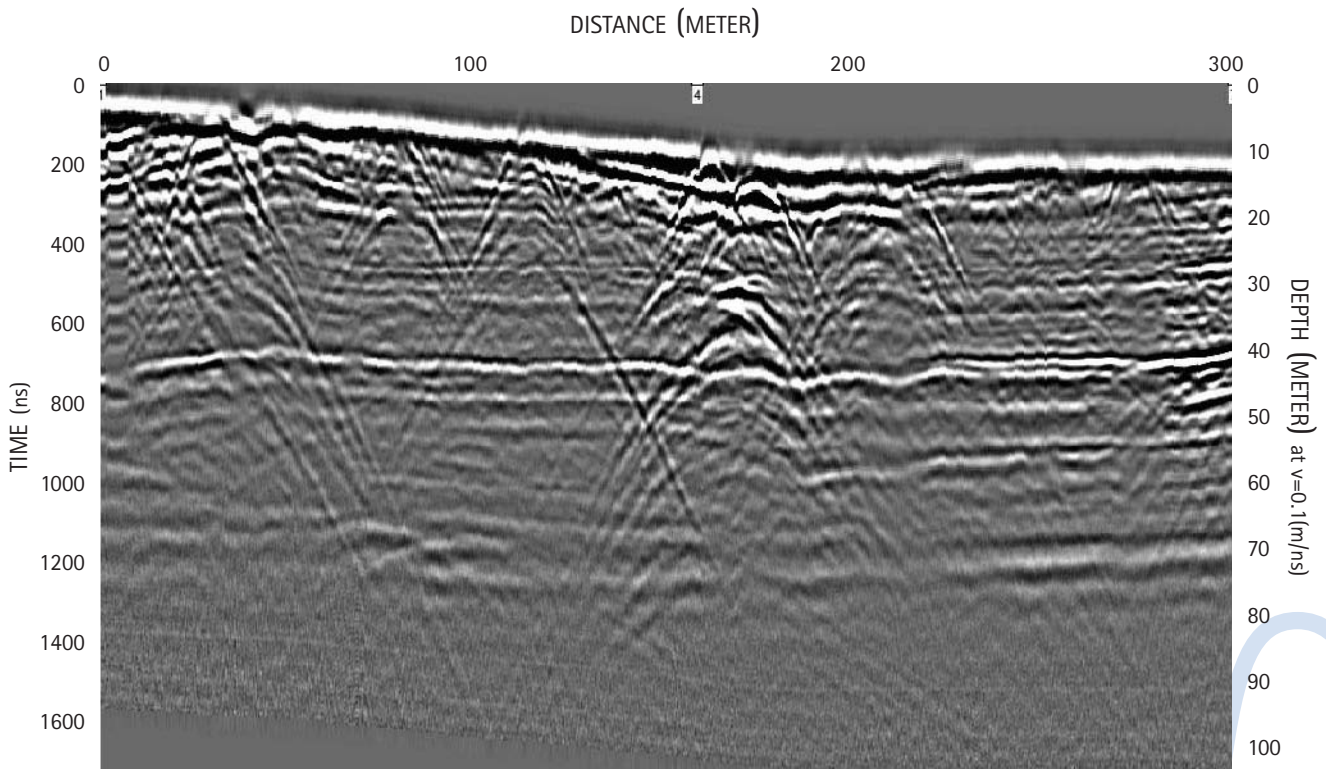
## Optional

Analytical software – the ReflexW package – is available. Details on request.

Above: Groundvue 7 operating in challenging conditions

See following page for sample data

## Sample data – Groundvue 7



**For a demonstration or further advice, please contact**

Utsi Electronics Ltd, Unit 26, Glenmore Business Park, Ely Road, Waterbeach, Cambridge CB25 9PG, UK

Tel: ++44 (0)1223 441521

Fax: ++44 (0)1223 863123

E-mail: [enquiries@utsielectronics.co.uk](mailto:enquiries@utsielectronics.co.uk)

[www.utsielectronics.co.uk](http://www.utsielectronics.co.uk)