

NEW

★ Denotes features unique to Groundvue GPRs

Groundvue 3_1 G.P.R.

High Speed
Single-Channel
with Wireless
Operation and
Windows Based
Software

High Speed Single-Channel

- 1,600 scans per second
- Antennas from 250MHz to 6GHz
- Tablet or laptop operation
- Traffic speed data collection
- ★ Fully integrated GPS

Wireless Operation

Flexibility

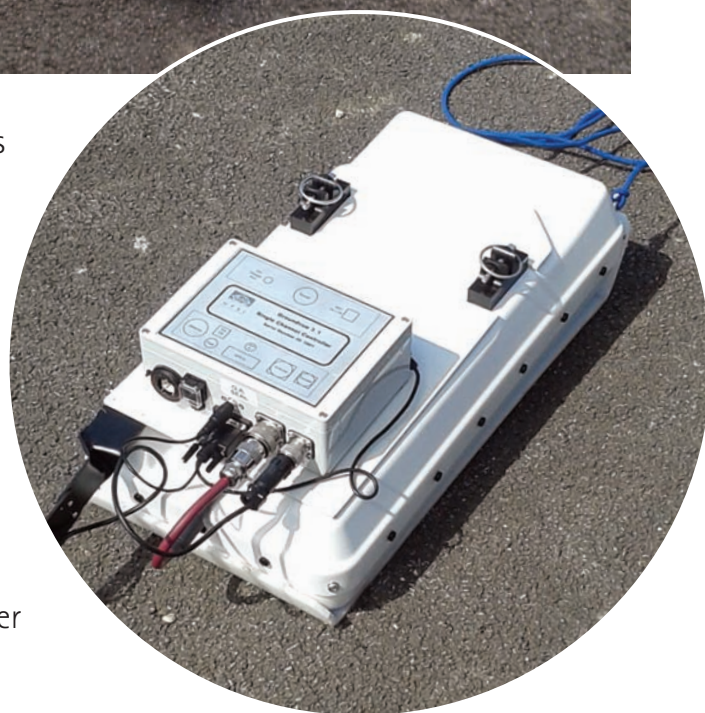
- ★ **Multi-functional** – the same system can be used from a trolley or from a vehicle or even hand pulled antennas from the same system
- ★ **Real-time monitoring** – with changeable gain and filter settings
- ★ **Real-time parameter changes** – for both gain and filter
- **Internal power** – rechargeable battery with option to use external battery

Efficient Economic Software Design

- **Windows based user-friendly software**
- **Integrated GPS/GPR** – much faster data collection
- **No pre-filtering required**
- **Signal quality monitoring** – simultaneous wiggle trace and 2D data
- **Utility mark up function** – for locating utilities on-site
- **Internal Tzero correction** – stored for automatic import into analytical package

Efficient Economic Hardware Design

- ★ **Clear data** – internal stacking to reduce noise, and jittered PRF to reduce interference
- **Low power consumption** – applies to controller and antennas, not just transmitter (c. 280mA @ 12V)
- **Fully screened**



Antenna Frequencies

6GHz, 4GHz, 1.5GHz, 1GHz, 400MHz and 250MHz

Regulation Compliance

ETSI compliant (CE marked)

FCC compliance available on request

Ancillaries

A laptop or tablet is required for radar operation and data storage

A long term data storage system is essential

A 12V charger is supplied for maintaining the internal battery

Analytical Software

Analytical software – the ReflexW package – is also available. Details on request

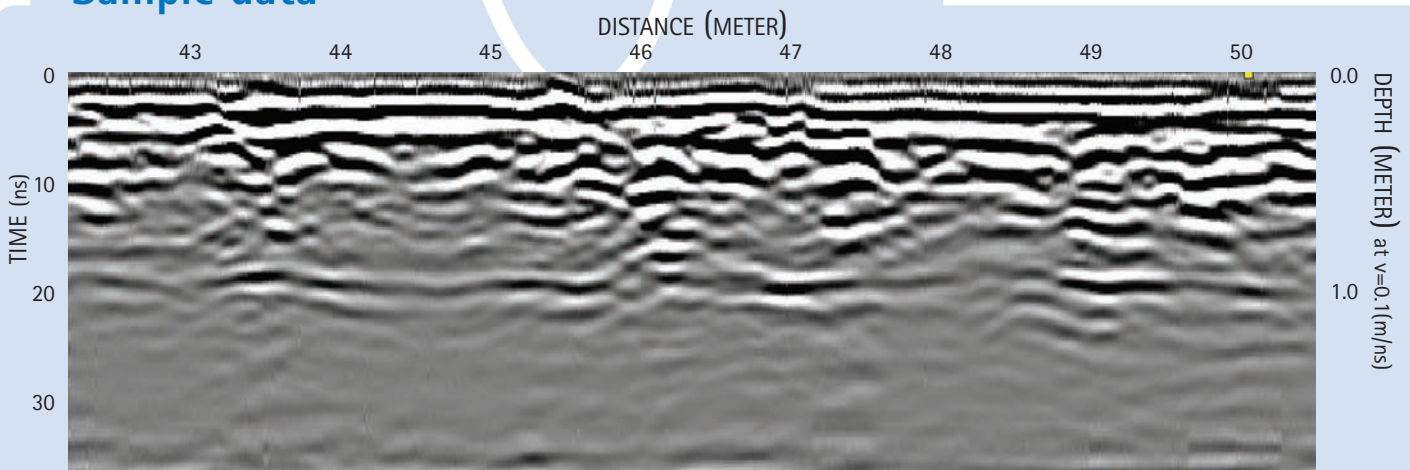
Groundvue data is also compatible with

Roadscanners, GPR-Slice and Geoscanners software

Data formats can be supplied to other software suppliers on request



Sample data



For a demonstration or further advice, please contact

Utsi Electronics Ltd, Unit 26, Glenmore Business Park, Ely Road, Waterbeach, Cambridge CB25 9PG, UK

Tel: ++44 (0)1223 441521

Fax: ++44 (0)1223 863123

E-mail: enquiries@utsielectronics.co.uk

www.utsielectronics.co.uk