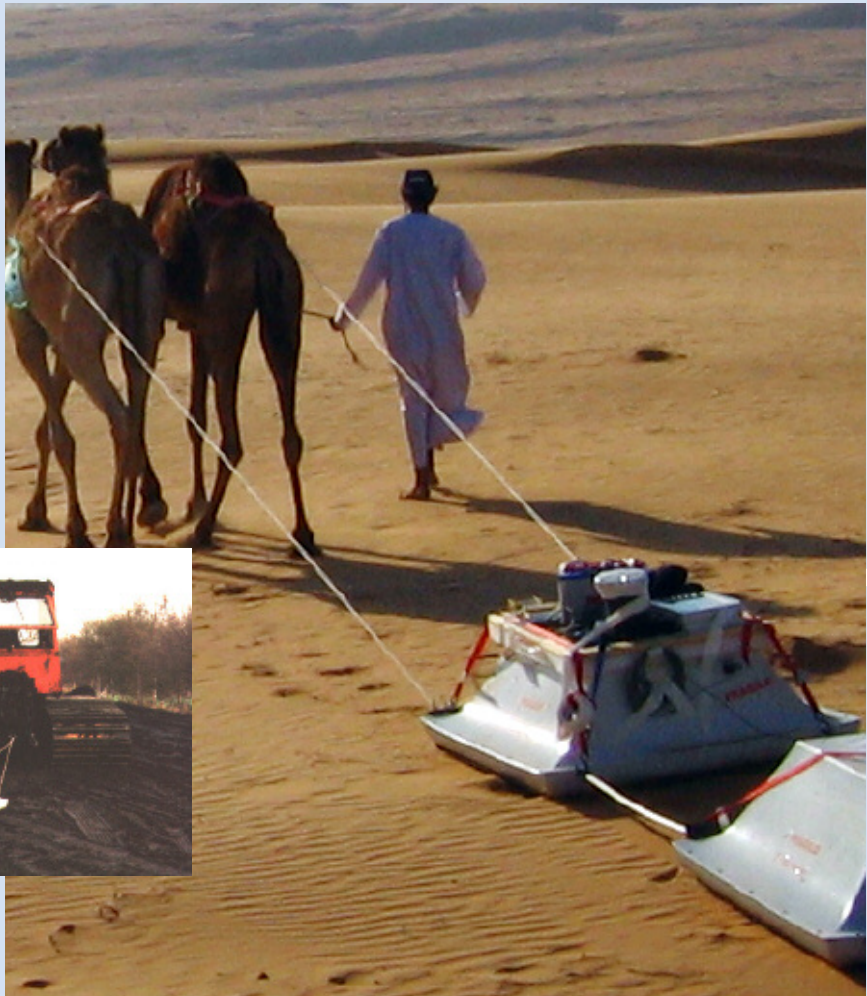


Groundvue 2

Like all Groundvue Ground Probing Radars, **Groundvue 2** is user friendly and uses easy to operate dedicated software. Operating depth (measured in travel time) and the distance between samples must be defined accurately. All other parameters can be reset after survey.



Frequency Range

50MHz central (range: 30MHz to 100MHz)

Depth Range

At 640ns:

from 0.5m to 30m in dry conditions

from 0.5m to 11m in waterlogging

At 1280ns:

from 0.5m to 60m in dry conditions

from 0.5m to 20m in waterlogging

from 0.5m to 85m in low loss dielectric material

Special Features

Arrayed antennas

Fully screened

Suitable for towing behind a vehicle during survey

Optional GPS/Total Station data input

Data Storage

Direct to solid disk

Resolution

Medium (200mm)

Ancillaries

Groundvue datalogger

A long term data storage system is essential

A basic 12V battery charger is needed to charge the radar batteries

Optional

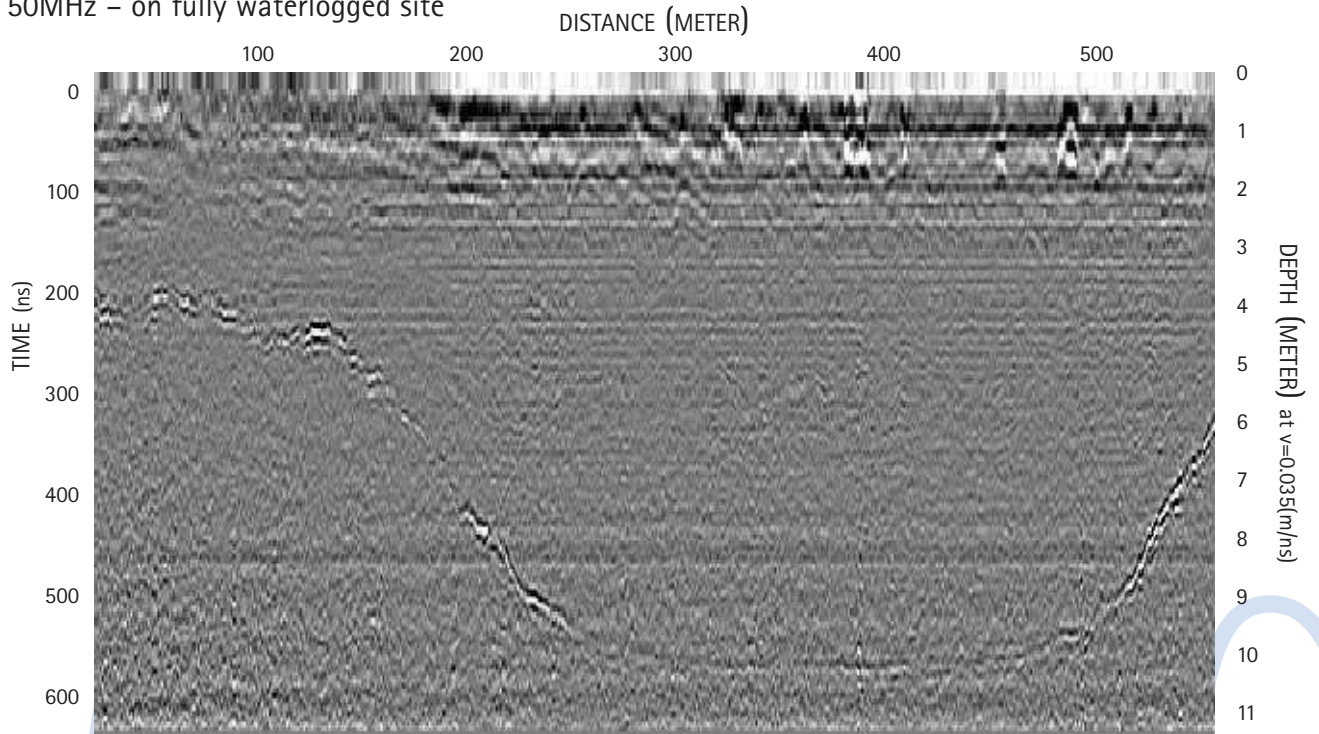
Cable connection to vehicle cigarette lighter useful for saving datalogger batteries but not essential

Analytical software – the ReflexW package – is also available. Details on request

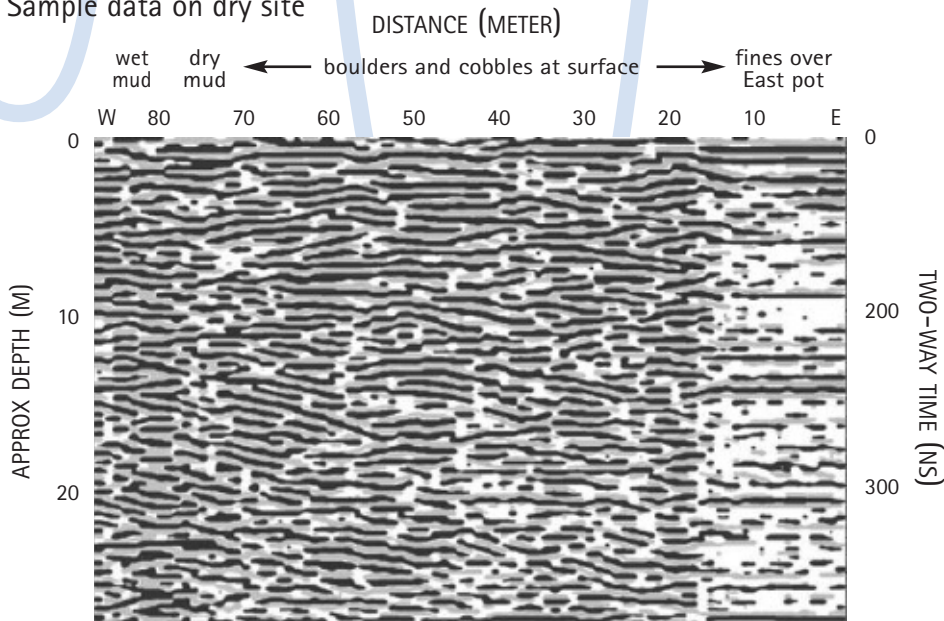
See following page for sample data

Sample data – Groundvue 2

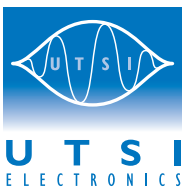
50MHz – on fully waterlogged site



Sample data on dry site



From 'Investigating the nature and origins of Gaping Gill Main Chamber' by Murphy et al, Cave & Karst Science, Vol 32, 2005



For a demonstration or further advice, please contact

Utsi Electronics Ltd, Sarek, Newton Road, Harston, Cambridge CB22 7NZ, United Kingdom

Tel: ++44 (0)1223 874318

Fax: ++44 (0)1223 874332

E-mail: enquiries@utsielectronics.co.uk

www.utsielectronics.co.uk